



# APPLICATION NOTE

## APP #136

### Revision History

Date	Author	Description
09-30/2019	DEW	Setup

# Calibrating the Touchscreen

Any questions regarding this release, contact: [support@mcscontrols.com](mailto:support@mcscontrols.com)

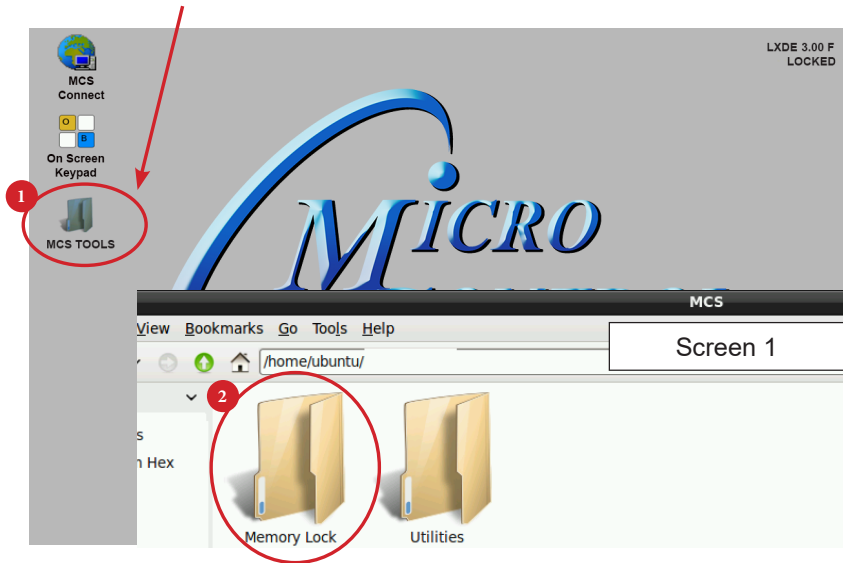
Micro Control Systems, Inc. 5580 Enterprise Parkway Fort Myers, Florida 33905  
(239)694-0089 FAX: (239)694-0031 [www.mcscontrols.com](http://www.mcscontrols.com)

Information contained in this document has been prepared by Micro Control Systems, Inc. and is copyright © protected 2017.  
Copying or distributing this document is prohibited unless expressly approved by MCS.

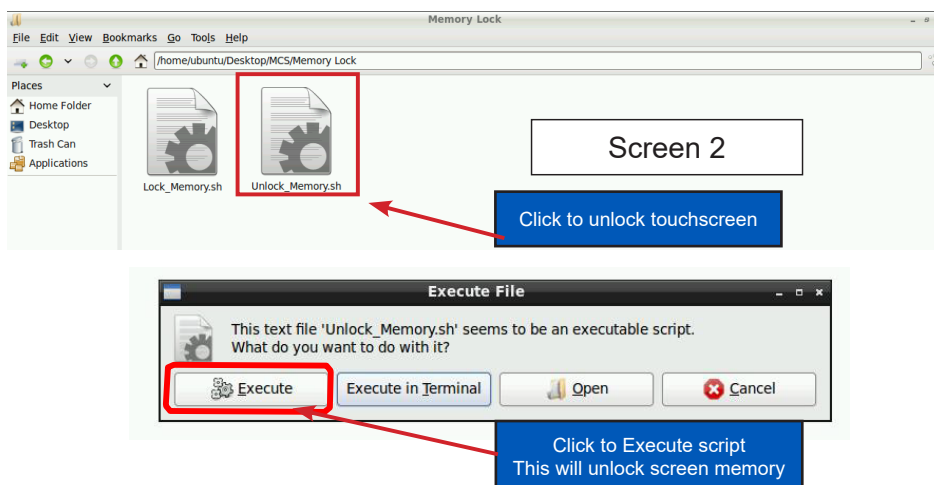
# Unlocking MCS-TOUCHSCREEN

## 1.1. Start by Unlocking the Touchscreen.

1. Click on the 'MCS TOOLS' folder on the desktop, 'MEMORY LOCK' sub folder will appear when this file is opened..



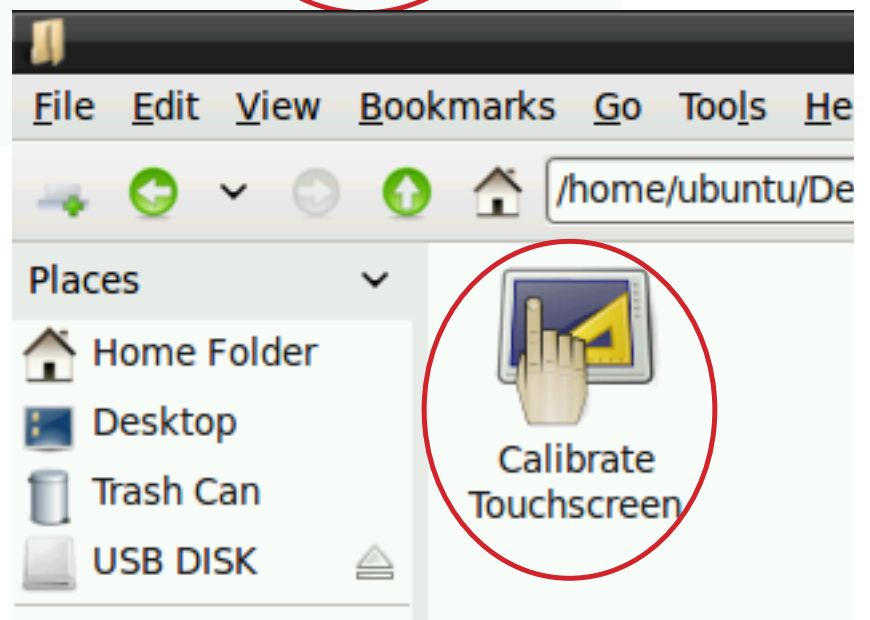
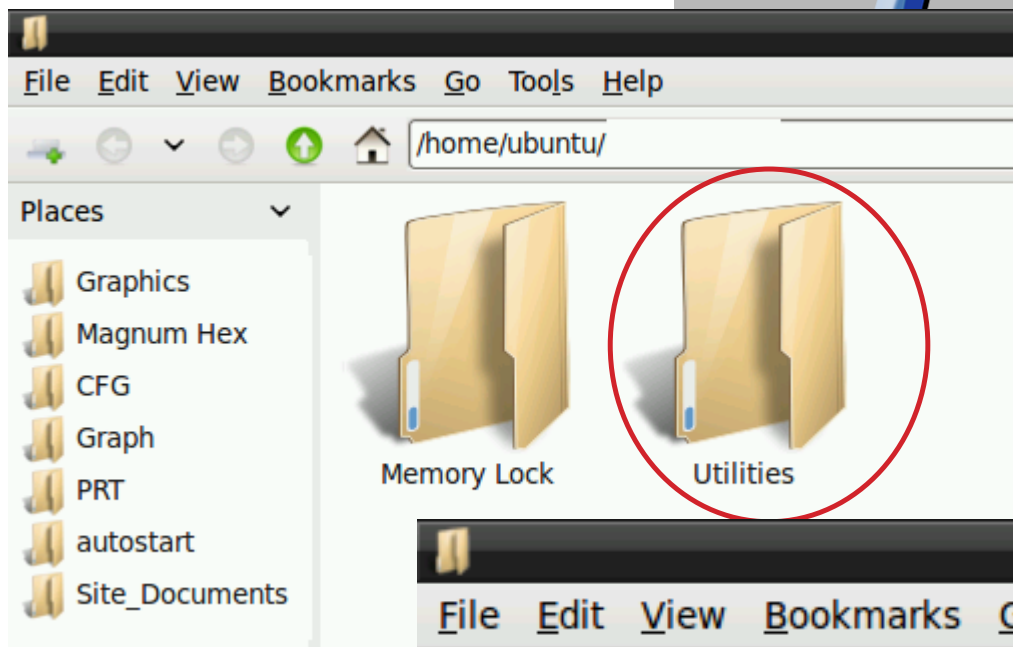
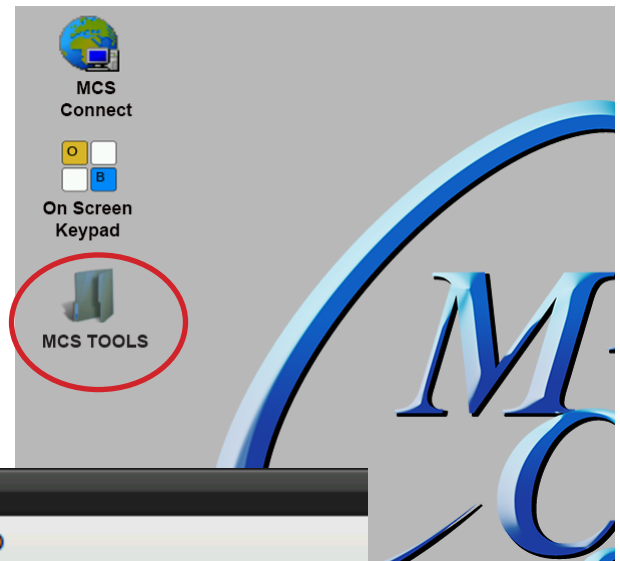
2. Double click on the 'Memory lock' folder
3. Double click on the 'Unlock Memory' icon
4. Next screen, click on 'Execute'
5. Touchscreen will perform a restart



## USING CALIBRATING SOFTWARE

At the main menu:

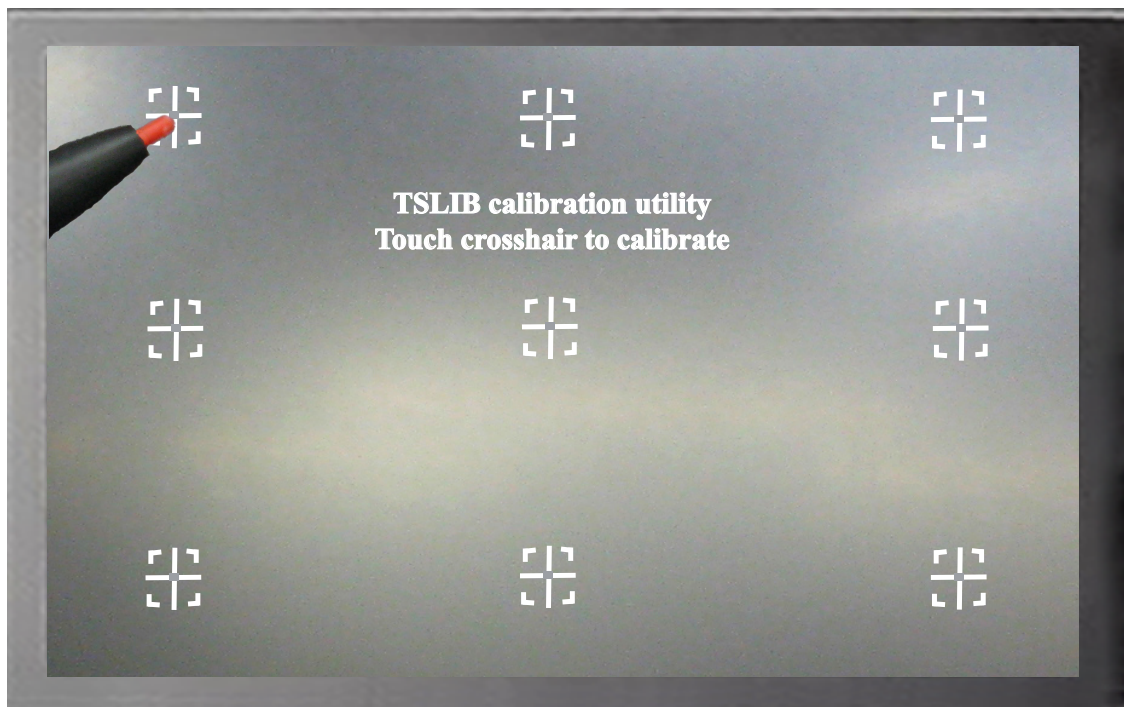
1. Click on the **'MCS TOOLS folder'**
2. Click on the **'Utilities' folder'**
3. Click on **'Calibrate Touchscreen'**
4. **Calibration software will open.**



## CALIBRATING WITH NEW 9 POINT SOFTWARE ON Touch 7 and 15.4

The screen below shows calibration for the touchscreens.

**(only one target point will display at a time)**



The first target point will display on the left top side of your screen.

1. Position your stylus pen point as close to the center of the target as you can.

**BE CAREFUL NOT TO PRESS ON THE SCREEN IN OTHER AREAS.**

2. After touching the left top target, the next target will appear in the top center and continue to display as per the screen below until all '**9 target points**' have been calibrated.

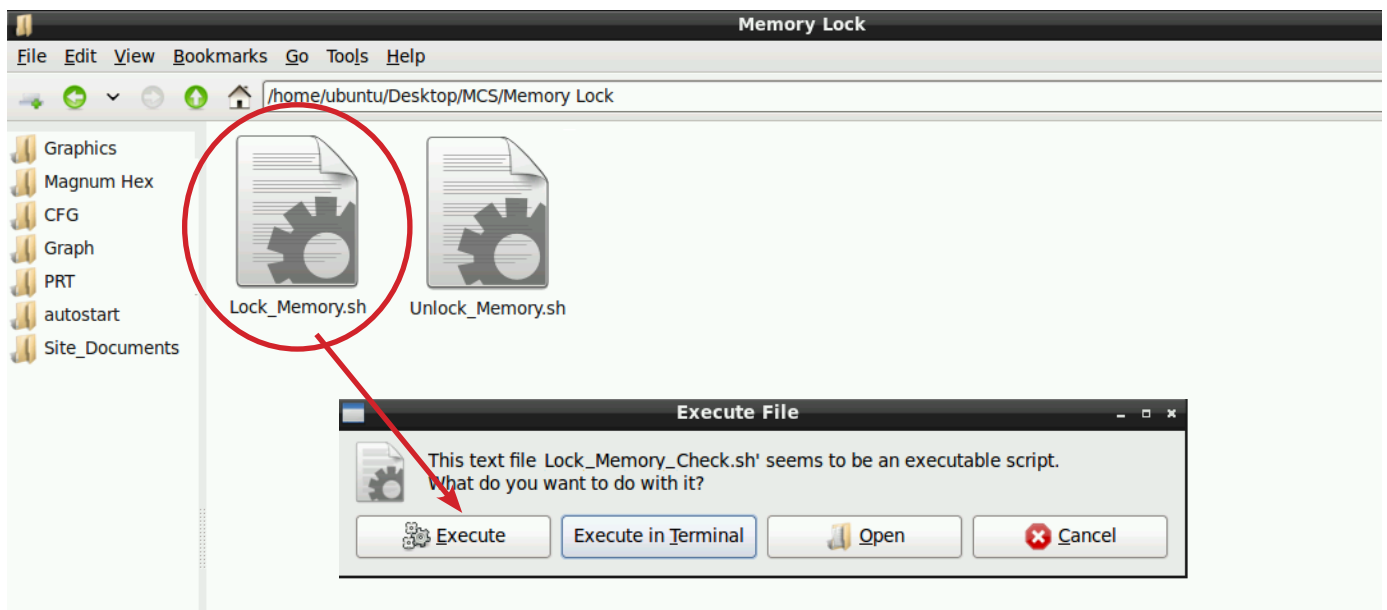
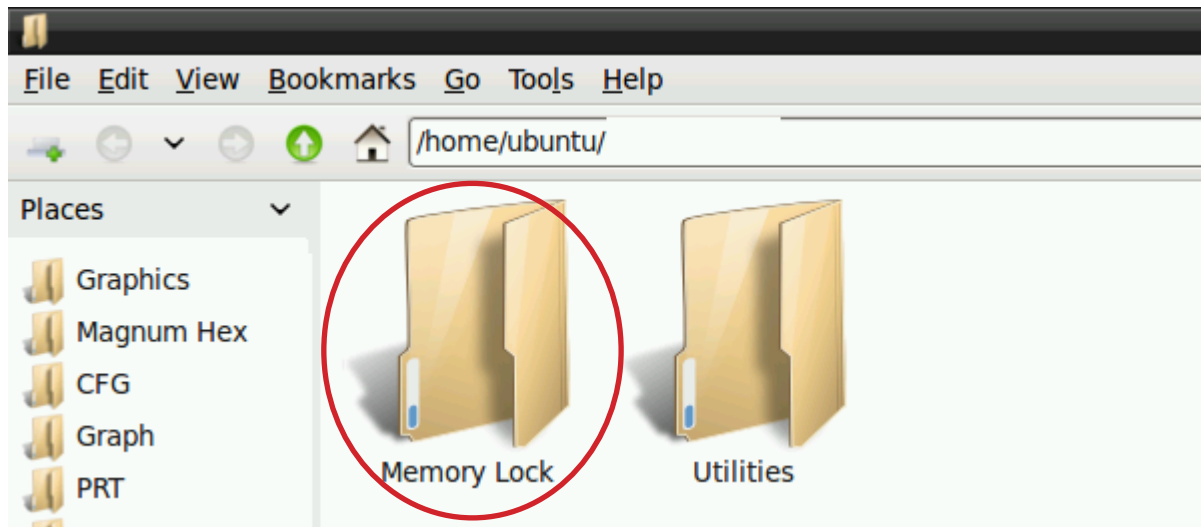
If satisfied with the calibration, go to the next step. If needed, rerun the calibration tool.

3. After you calibrated all 9 points on the screen you will be returned to the desktop.



## LOCKING THE TOUCHSCREEN AFTER CALIBRATION

1. Click on **'MEMORY LOCK'**, **CLICK ON 'LOCK MEMORY'**, click on **'EXECUTE**



**When the Lock Memory file is pressed it does an automatic reboot and autostarts MCS-Connect. Check the top right corner of the desktop to make sure the touchscreen is locked.**